

AOI & SPI solutions you can count on



FX-940UV ACI / AOI

In-Line Optical Inspection for conformal coating and parts

Conformal coatings used by electronic manufacturers contain UV indicators for the purpose of inspection. Since coatings are transparent, units must be viewed under black light in order to verify coverage and non-coverage. The Nordson TEST & INSPECTION's FX-940UV makes inspection of conformal coatings simple and convenient by automating the inspection process for quality and consistency of coatings under UV lighting with the use of proprietary inspection algorithms.

With minimal programming, the inspection set-up is fast and intuitive typically requiring less than 30 minutes. A known good board is used to learn the coverage and non-coverage areas. The automated inspection typically takes only a few seconds with inspection results immediately displayed. These results can be stored and reviewed off-line at any time. The FX-940UV also reads all common barcodes for product traceability.

Features

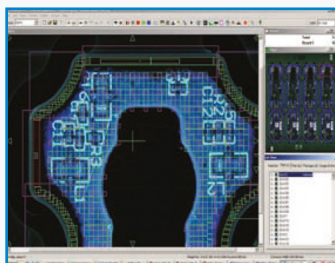
- Quick set-up with Auto Train
- Megapixel color imaging
- Proprietary lighting
- Optional side angle cameras

Automated Inspection for

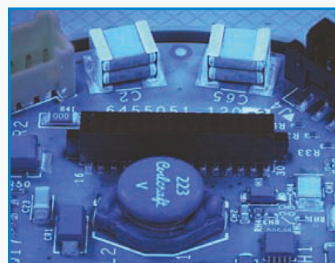
- Conformal coat coverage
- Micro Coatings
- Flux coverage
- Selected areas of non-coverage
- Delamination / cracks and bubbles
- SPC, barcode reading and archiving of inspection results
- Includes SMT and THT component inspection

Specifications

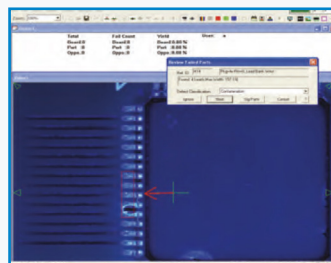
Inspection Capabilities	
Throughput	Up to 30 sq. in./ sec. (194 sq. cm)
Maximum Board Size	27.5" x 23" (698 mm x 584mm)
Maximum Inspection Area	17" x 18.5" (437mm x 470mm)
Clearance	4" (100mm) top and bottom
Optional Upgrade	4 side angle cameras
Defects Detected	Coatings and dispensed material coverage, non-coverage, cracks and delamination
Software	
Algorithms	Color, OCV, OCR, barcode recognition, both image and rule-based algorithms
Data Requirements	None
CAD Translation Package	Not required
Programming Skill Level	Technician or operator
Operating System	Windows 10
Off-line Software	Optional - Rework, Review and Program Creation
SPC Software	Real-time local and remote monitoring of first pass yield, defect trends, and machine utilization.
Hardware	
Lighting	Proprietary UV, Coax and White LED lighting
Imager	Megapixel color camera: 12 or 20 µm pixel size Resolution 2448 x 2048
Facilities	
Power	110-220 VAC, 50/60 Hz, 15 amps
Footprint	39" x 52" x 60" (1000mm x 1329mm x 1531mm)
Weight	950 lbs (430 kg)
Machine Installation	< .5 hour



Automated inspection for conformal coat.



Side angle viewing cameras.



Defect image of missing conformal coat.

For more information, speak with your Nordson representative or contact your Nordson regional office

Nordson Test & Inspection Europe, SEA, Africa
ti-sales-eu@nordson.com

Nordson Test & Inspection Americas
ti-sales-us@nordson.com

Nordson Test & Inspection China
ti-sales-cn@nordson.com

Nordson Test & Inspection Japan
ti-sales-jp@nordson.com

Nordson Test & Inspection Singapore
ti-sales-eu@nordson.com

Nordson Test & Inspection Taiwan
ti-sales-tw@nordson.com

Nordson Test & Inspection Korea
ti-sales-korea@nordson.com