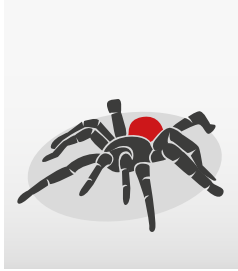




RELENTLESS ALL-TERRAIN DISPENSER

Precise, Fast, Adaptive & Versatile



tarantula.

RELENTLESS ALL-TERRAIN DISPENSER

Introducing – The Tarantula – State of the art technology with a wide range of applications.



LINE SOLUTION

Integration in any line

CELL SOLUTION

dispense technology.

- Up to 3 valves simultaneously
- 5 different valves, large application range

process control.

- Monitoring sizes & weight of dispense dots
- Process control adjustment and dot stabilisation

productivity.

- Up to 145'000 dots/h (with Piezo Jet Valve)
- Up to 2'000'000 dots/h in line mode

large dispense area.

- PCB size 560 x 610 mm, optional 1'800 x 610 mm
- Up to 80 mm (3.35") programmable Z stroke

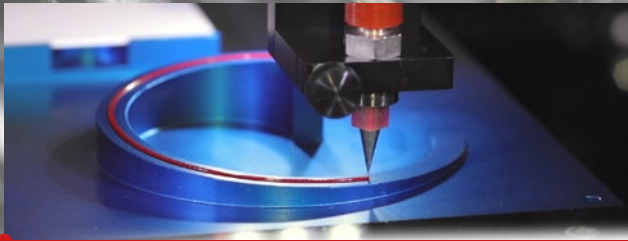
mineral cast chassis.

- No vibration, symmetrical mineral casting
- No warpage, no thermal drift

linear motors.

- Fast, reliable double drive linear motors
- No maintenance, longest lifetime

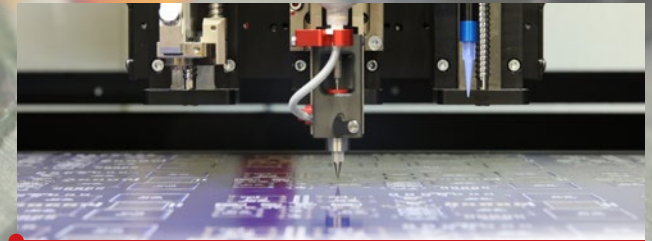
INTEGRATE INTO HIGH SPEED LINES AND HIGHLY COMPLEX DISPENSE APPLICATIONS.



Wide range of dispensing applications such as Solder Paste and SMT Glue, LED Encapsulation, Silver Epoxy, Dam and Fill, Underfill, Cavity Fill, 3D Dispensing via laser height mapping. Standard cleanroom according to ISO7 (class 10'000).



Full operator support - Automated error analysis & KPI. Training, support and troubleshooting via advanced remote access. Investment protection; all options and heads retrofittable. Modules are expandable in any direction.



Three processes at the same time. Plug and Play for valve change. Piezo Jet Valve - super high speed for low viscosity. Solder Jet Valve, Volume Displacement Valve, Time-Pressure Valve, Archimedean Screw Valve.



MULTITALENT SOFTWARE AT YOUR FINGERTIPS State of the art, full graphics, 21.5", 16:9 HD wide touch screen, Windows 10 - 64 bit, fingertip operation, universal CAD conversion, zoom at camera windows, all-in-one job planning, setup optimisation, easy definition of pattern and assistant process support and more

optional.

Valves & Pumps

Media Heating Needle and jet heating system

Level Detection Automatic syringe level detection



Full process control meeting automotive standards and more, Adaptation & stabilisation, Integration & datatransfer of existing pick-and-place machines as Diplan, UniCam, Cogiscan etc., Vacuum Cleaning Station, High Precision Scale, Heating/Vacuum Tables



CHOOSE YOUR PREFERENCES



Inline with Puma Pick-and-Place

tarantula.

Process	Max. dispensing speed (dots/h)	Piezo Jet: 145'000 Pneumatic Jet: 77'000	Time-Pressure: 26'000 Volume-/Screw-: 22'000
	Dispense mode	Dot, line, curve, interpolated 3D contour	
Accuracy	Placement XY dots	40 µm (3σ)	
	Positioning Z axis	20 µm (3σ)	
PCB	PCB dimensions	560 x 610 mm (22 x 24"), optional 1'800 x 610 mm (71 x 24")	
Dimensions	Machine footprint	1'557 x 1'357 mm (61 x 53")	



FLEXIBLE SMT SOLUTIONS

Essemtec AG

Mosenstrasse 20
CH-6287 Aesch/LU
Switzerland

Phone: +41 (0)41 919 60 60
Fax: +41 (0)41 919 60 50
Mail: info@essemtec.com

Wildlife consistently shows us with breathtaking flexibility how nature can adapt itself to the many different demands of its environment; that is what inspires us! Essemtec AG is a privately owned company with its development and production site in Switzerland. The product portfolio comprises of production equipment for electronic assembly and more. Our high tech solutions can be adjusted quickly and easily to meet wide ranging requirements; we are therefore able to respond to all manner of customer requests. That's why "naturally adaptive" is our motto across all ranges.

Disclaimer & Copyright:

The information contained in this brochure is for general information purposes only. For more information see the specification sheet. All materials contained in this brochure are copyright © Essemtec AG, Switzerland, Nov 2017

