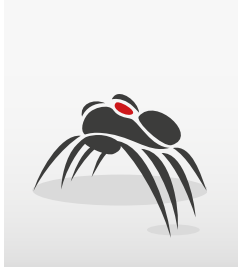




## SMART-SIZED HIGH SPEED DISPENSER

Versatile, Accurate, Artistic & Reliable





spider. solution.

## SMART-SIZED HIGH SPEED DISPENSER

Introducing - The Spider - State of the art technology, easily integrated in any line.



LINE SOLUTION

CELL SOLUTION

### dispense technology.

- Up to 2 valves simultaneously
- 5 different valves, large application range

### productivity.

- Up to 150'000 dots/h (with Piezo Jet Valve)
- Up to 2'000'000 dot/h line mode

### small footprint.

- Requires only 1 m<sup>2</sup> of production floor
- Machine fits through 90 cm wide door

### mineral cast.

- No vibration, symmetrical mineral casting
- No warpage, no thermal drift

### laser height mapping.

- Mapping of heights using laser technology
- Compensation of substrate warp / 3D contour

### linear motors.

- Fast, reliable double drive linear motors
- No maintenance, longest lifetime

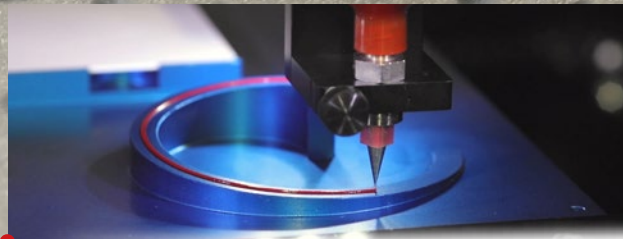
[www.essemtec.com](http://www.essemtec.com)



# INTEGRATE INTO HIGH SPEED LINES AND HIGHLY COMPLEX DISPENSE APPLICATIONS



Wide range of dispensing applications such as Solder Paste and SMT Glue, LED Encapsulation, Silver Epoxy, Dam and Fill, Underfill, Cavity Fill, 3D Dispensing via laser height mapping and more



Full operator support - Automated error analysis & KPI. Training, support and troubleshooting via advanced remote access. Investment protection; all options and heads retrofittable.



Two processes at the same time. Plug and Play for valve change. Piezo Jet Valve - super high speed for low viscosity. Solder Jet, Volume Displacement, Time/Pressure, Archimedean Screw Valve



**MULTITALENT SOFTWARE AT YOUR FINGERTIPS** State of the art, full graphics, 21.5", 16:9 HD wide touch screen, fingertip operation, universal CAD conversion, Windows 10 - 64 bit, zoom at camera windows, all-in-one job planning, setup optimisation, easy definition of pattern and assistant process support



## optional.

Valves & Pumps

Media Heating Needle and jet heating system

Level Detection Automatic syringe level detection

Process Control Process control adjustment & stabilization

Vacuum Cleaning Station, High Precision Scale, Clean Room, Heating/Vacuum Table  
Full process control meeting automotive standards and more





## CHOOSE YOUR PREFERENCES

**essemtec.**  
naturally adaptive

### spider.

Process	Max. dispensing speed	Piezo Jet: 150'000 dots/h Pneumatic Jet: 80'000 dots/h	Time/Pressure: 28'000 dots/h Archimedean Screw: 24'000 dots/h
	Dispensing mode	Dot, line, curve, interpolated 3D contour	
Accuracy	Placement XY dots	40 µm (3σ)	
	Positioning Z axis	20 µm (3σ)	
PCB	PCB dimensions	50 x 50 mm up to 406 x 305 mm (2 x 2" up to 16 x 12")	
Dimensions	Machine footprint	880 x 1090 mm (34.7 x 43")	

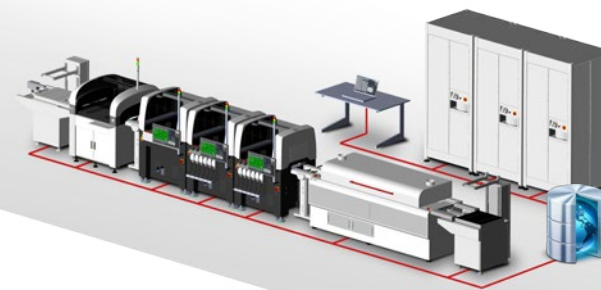


## FLEXIBLE SMT SOLUTIONS

### Essemtec AG

Mosenstrasse 20  
CH-6287 Aesch/LU  
Switzerland

Phone: +41 (0)41 919 60 60  
Fax: +41 (0)41 919 60 50  
Mail: [info@essemtec.com](mailto:info@essemtec.com)



Wildlife consistently shows us with breathtaking flexibility how nature can adapt itself to the many different demands of its environment; that is what inspires us! Essemtec AG is a privately owned company with its development and production site in Switzerland. The product portfolio comprises of production equipment for electronic assembly and more. Our high tech solutions can be adjusted quickly and easily to meet wide ranging requirements; we are therefore able to respond to all manner of customer requests. That's why "naturally adaptive" is our motto across all ranges.

#### Disclaimer & Copyright:

The information contained in this brochure is for general information purposes only. For more information see the specification sheet. All materials contained in this brochure are copyright © Essemtec AG, Switzerland, May 2017

[www.essemtec.com](http://www.essemtec.com)