

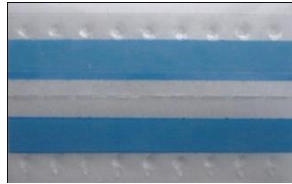
Splicing Solutions for the SMT Industry

Complete line of tape splices, cover tape extenders and tools. Examples of a variety of parts and tools are shown below. If you don't see what you are looking for, please contact us as we are always adding new items.

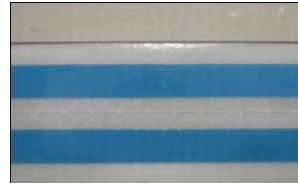
***** No charge samples are available for evaluation upon request *****



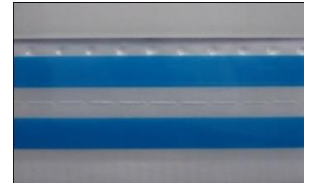
Cover Tape Extenders



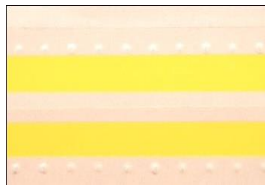
Super Double Splice Tape
(w/outside dimples)



Super Double Splice Tape
(w/edge guide)



Super Double Splice Tape
(w/edge guide and dimples)



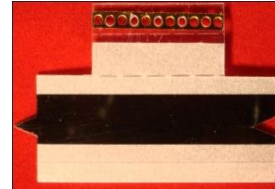
Double Splice Tape



Special Tape w/edge guide



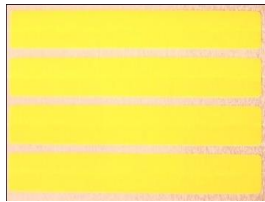
Clip and Splice Tape



Clip and Special Tape



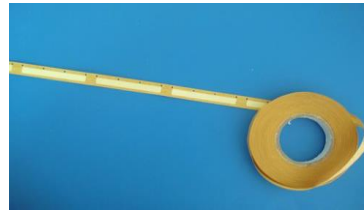
Special Splice Tape



Single Splice Tapes (multi-up)



Single Splice Tape



Single Splice Tapes - Reel



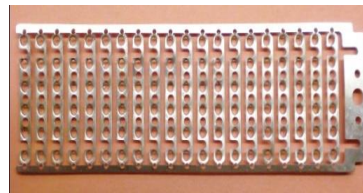
Brass Clips - Reel



Brass Splice Clips



Steel Splice Clips



Brass Strips in Frame



Splice Stapler used with
brass strips in frame



Splice Tool for joining
carrier tapes w/clips



Splice Tool for joining
carrier tapes w/clips



Cutting Scissors
(with guide)



Tape Cutter
(with guide)



Tape Cutter

sales@methodsautomation.com

4 Glyndon Drive, Suite 2C, Reisterstown Road, Reisterstown, MD 21136

Phone 443-650-1000 Fax 443-650-1005

SMT Cover Tape Extenders



Cover tape extenders are used when a reel of SMT components doesn't have a leader at the beginning of the reel.

The tape extenders add an additional 396mm (15.6") or a longer length of 500mm (19.7") of tape as a leader and feed into SMT placement equipment as a piece of cover tape. Without the leader, components are often discarded or have to be repackaged before being used.

These extenders can be used with either paper or plastic tape, punched or formed pockets, from 4 - 44mm width. No tools required.

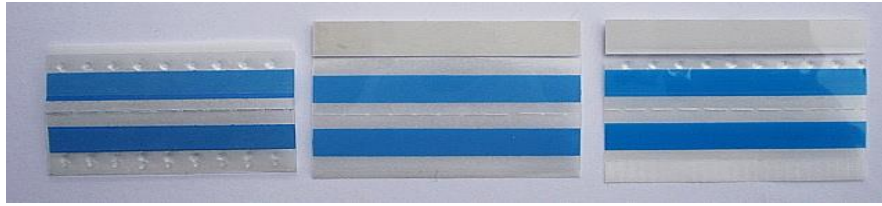
PART #	DESCRIPTION	DIMENSIONS	QUANTITY
SR.0504.1	SMT Cover Tape Extender for 4mm Carrier Tape (Yellow)	2.5mm wide x 396mm length	Box of 500
SR.0505.0	SMT Cover Tape Extender for 8/12 mm Carrier Tape (Yellow)	5mm wide x 396mm length	Box of 500
SR.0505.0B	SMT Cover Tape Extender for 8/12mm Carrier Tape (Blue)	5mm wide x 396mm length	Box of 500
SR.0505.1	SMT Cover Tape Extender for 8/12mm Carrier Tape (Yellow)	5mm wide x 500mm length	Box of 500
SR.0505.1BNDL	SMT Cover Tape Extender for 8/12mm Carrier Tape (Yellow)	5mm wide x 500mm length	Box of 50
SR.0509.1	SMT Cover Tape Extender for 16mm Carrier Tape (Yellow)	9mm wide x 500mm length	Box of 500
SR.0518.1	SMT Cover Tape Extender for 24mm Carrier Tape (Yellow)	18mm wide x 500mm length	Box of 250
SR.0525.1	SMT Cover Tape Extender for 32mm Carrier Tape (Yellow)	25mm wide x 500mm length	Box of 250
SR.0532.1	SMT Cover Tape Extender for 44mm Carrier Tape (Yellow)	32mm wide x 500mm length	Box of 250

sales@methodsautomation.com

4 Glyndon Drive, Suite 2C, Reisterstown Road, Reisterstown, MD 21136

Phone 443-650-1000 Fax 443-650-1005

SMT Super Double Splice Tape (Blue)



Blue colored tape with better adhesion. Can be used with paper or plastic tape, formed or punched pockets. No tool required.

PART #	DESCRIPTION	APPLICATION	QUANTITY
SR.0108.1B	SMD Super Double Splice Tape - 8mm Blue with outside sprocket dimples (4.8mm x 2) x 40mm	Used with 8mm carrier tapes	Box of 500
SR.0112.1B	SMD Super Double Splice Tape - 12mm Blue with outside sprocket dimples (7.2mm x 2) x 40mm	Used with 12mm carrier tapes	Box of 500
SR.0116.1B	SMD Super Double Splice Tape - 16mm Blue with outside sprocket dimples (9.5mm x 2) x 40mm	Used with 16mm carrier tapes	Box of 500
SR.0124.1B	SMD Super Double Splice Tape - 24mm Blue with outside sprocket dimples (17mm x 2) x 44mm	Used with 24mm carrier tapes	Box of 250

SR.0108.2B	SMD Super Double Splice Tape - 8mm Blue with edge guide (4.8mm x 2) x 40mm	Used with 8mm carrier tapes	Box of 500
SR.0112.2B	SMD Super Double Splice Tape - 12mm Blue with edge guide (7.2mm x 2) x 40mm	Used with 12mm carrier tapes	Box of 500
SR.0116.2B	SMD Super Double Splice Tape - 16mm Blue with edge guide (9.5mm x 2) x 40mm	Used with 16mm carrier tapes	Box of 500
SR.0124.2B	SMD Super Double Splice Tape - 24mm Blue with edge guide (17mm x 2) x 44mm	Used with 24mm carrier tapes	Box of 250

SR.0108.3B	SMD Super Double Splice Tape - 8mm Blue with dimples and edge guide (4.8mm x 2) x 40mm	Used with 8mm carrier tapes	Box of 500
SR.0112.3B	SMD Super Double Splice Tape - 12mm Blue with dimples and edge guide (7.2mm x 2) x 40mm	Used with 12mm carrier tapes	Box of 500
SR.0116.3B	SMD Super Double Splice Tape - 16mm Blue with dimples and edge guide (9.5mm x 2) x 40mm	Used with 16mm carrier tapes	Box of 500
SR.0124.3B	SMD Super Double Splice Tape - 24mm Blue with dimples and edge guide (17mm x 2) x 44mm	Used with 24mm carrier tapes	Box of 250

sales@methodsautomation.com

4 Glyndon Drive, Suite 2C, Reisterstown Road, Reisterstown, MD 21136

Phone 443-650-1000 Fax 443-650-1005



SMT Double Splice Tape (Yellow)



Alignment is done without tools or special fixtures using the pre-spaced dimples in the hard plastic card. Can be used with either paper or plastic punched tape from 8 - 24mm in width. Maintains precise pitch spacing and cover tape integrity. No tools required for use.

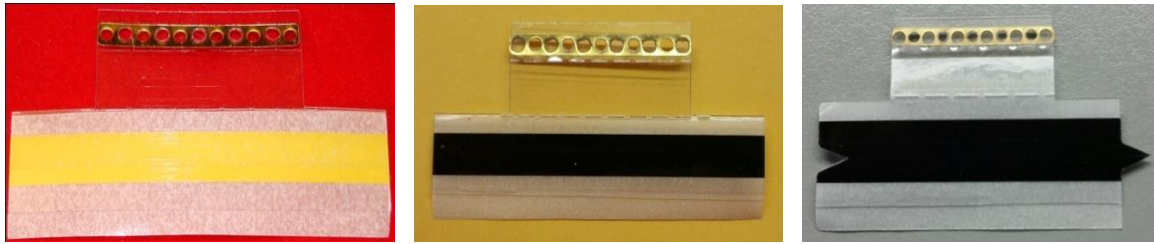
PART NUMBER	DESCRIPTION	APPLICATION	QUANTITY
SR.0108.1	SMT Double Splice Tape - 8mm Yellow w/outside sprocket dimples (4.8 x 2mm) x 40mm	Used with 8mm carrier tapes	Box of 500
SR.0112.1	SMT Double Splice Tape - 12mm Yellow w/outside sprocket dimples (7 x 2mm) x 40mm	Used with 12mm carrier tapes	Box of 500
SR.0116.1	SMT Double Splice Tape - 16mm Yellow w/outside sprocket dimples (9.5 x 2mm) x 40mm	Used with 16mm carrier tapes	Box of 500
SR.0124.1	SMT Double Splice Tape - 24mm Yellow w/outside sprocket dimples (17 x 2mm) x 44mm	Used with 24mm carrier tapes	Box of 250

sales@methodsautomation.com

4 Glyndon Drive, Suite 2C, Reisterstown Road, Reisterstown, MD 21136

Phone 443-650-1000 Fax 443-650-1005

SMT Clip and Splice Tape



An innovative design with a combination of brass clip and single splice tape on a plastic backing. These products can be used with paper or plastic tape, formed or punched pockets. Use with SR.SPLTL or SR.NSPLTL splice tool.

PART #	DESCRIPTION	APPLICATION	QUANTITY
SR.CLSP.8	SMT Clip and Splice Tape - 8mm Yellow with brass splice clip 4.8mm x 40mm	Used with 8mm carrier tapes	Box of 500
SR.CLSP.12	SMT Clip and Splice Tape - 12mm Yellow with brass splice clip 7mm x 40mm	Used with 12mm carrier tapes	Box of 500
SR.CLSP.16	SMT Clip and Splice Tape - 16mm Yellow with brass splice clip 9.6mm x 40mm	Used with 16mm carrier tapes	Box of 500
SR.CLSP.24	SMT Clip and Splice Tape - 24mm Yellow with brass splice clip 17mm x 40mm	Used with 24mm carrier tapes	Box of 250

SR.CLSP.8.BK	SMT Clip and Splice Tape - 8mm Black with brass splice clip 4.8mm x 40mm	Used with 8mm carrier tapes	Box of 500
SR.CLSP.12.BK	SMT Clip and Splice Tape - 12mm Black with brass splice clip 7mm x 40mm	Used with 12mm carrier tapes	Box of 500
SR.CLSP.16.BK	SMT Clip and Splice Tape - 16mm Black with brass splice clip 9.6mm x 40mm	Used with 16mm carrier tapes	Box of 500
SR.CLSP.24.BK	SMT Clip and Splice Tape - 24mm Black with brass splice clip 17mm x 40mm	Used with 24mm carrier tapes	Box of 250

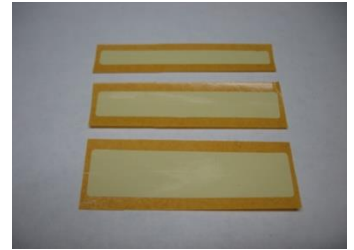
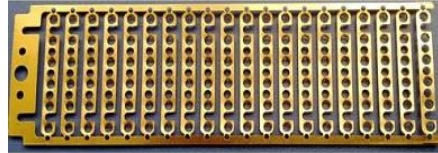
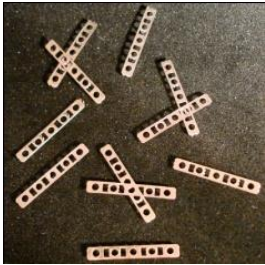
SR.CLSP.8.BKA	SMT Clip and Splice Tape - 8mm Black with brass splice clip and alignment arrow 4.8mm x 40mm	Used with 8mm carrier tapes	Box of 500
SR.CLSP.12.BKA	SMT Clip and Splice Tape - 12mm Black with brass splice clip and alignment arrow 7mm x 40mm	Used with 12mm carrier tapes	Box of 500
SR.CLSP.16.BKA	SMT Clip and Splice Tape - 16mm Black with brass splice clip and alignment arrow 9.6mm x 40mm	Used with 16mm carrier tapes	Box of 500
SR.CLSP.24.BKA	SMT Clip and Splice Tape - 24mm Black with brass splice clip and alignment arrow 17mm x 40mm	Used with 24mm carrier tapes	Box of 250

sales@methodsautomation.com

4 Glyndon Drive, Suite 2C, Reisterstown Road, Reisterstown, MD 21136

Phone 443-650-1000 Fax 443-650-1005

SMT Single Splice Tape and Clips



Splice tape can be used with either paper or plastic tape, punched or formed pockets, from 8-24mm in width. Clips require use of tools for application. See asterik's * below for applicable tools.

PART NUMBER	DESCRIPTION	APPLICATION	QUANTITY
SR.0208.0	SMT Single Splice Tape - 8mm 4.5mm x 48mm	Used for 8mm carrier tape	Box of 1000
SR.0212.0	SMT Single Splice Tape - 12mm 7mm x 48mm	Used for 12mm carrier tape	Box of 1000
SR.0216.0	SMT Single Splice Tape - 16mm 9.5mm x 48mm	Used for 16mm carrier tape	Box of 1000
SR.0224.0	SMT Single Splice Tape - 24mm 17mm x 48mm	Used for 24mm carrier tape	Box of 1000
SR.BSC.1K	SMT Brass Splice Clip for Joining Tapes *	Used for all carrier tape	Box of 1000
SR.BSC.4K	SMT Brass Splice Clip for Joining Tapes *	Used for all carrier tape	Box of 4000
SR.BSCF	SMT Brass Splice Clips in a Frame for Joining Tapes **	Used for all carrier tape	Box of 500
SR.BSCR	SMT Brass Splice Clips in a Reel for Joining Tapes *	Used for all carrier tape	Reel of 900
SR.SSC	SMT Steel Splice Clip for Joining Tapes *	Used for all carrier tape	Box of 1000

* Requires either SR.SPLTL or SR. NSPLTL tool

** Requires SR.STPLR tool

sales@methodsautomation.com

4 Glyndon Drive, Suite 2C, Reisterstown Road, Reisterstown, MD 21136

Phone 443-650-1000 Fax 443-650-1005