

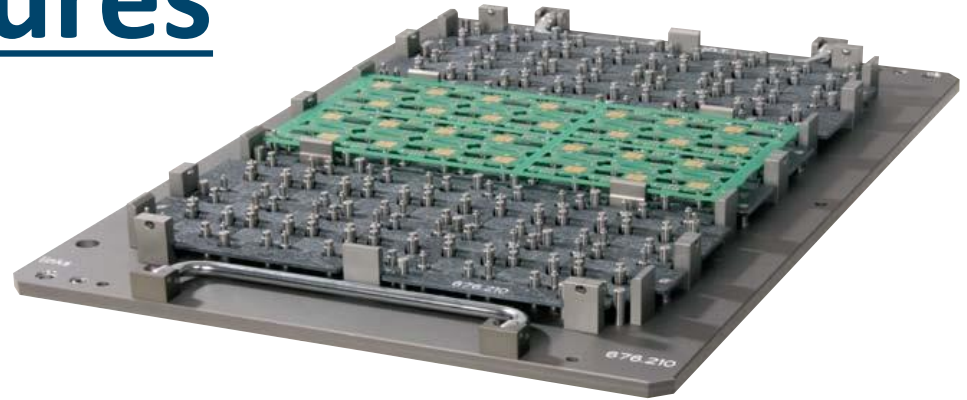
Superior Clamping and Gripping



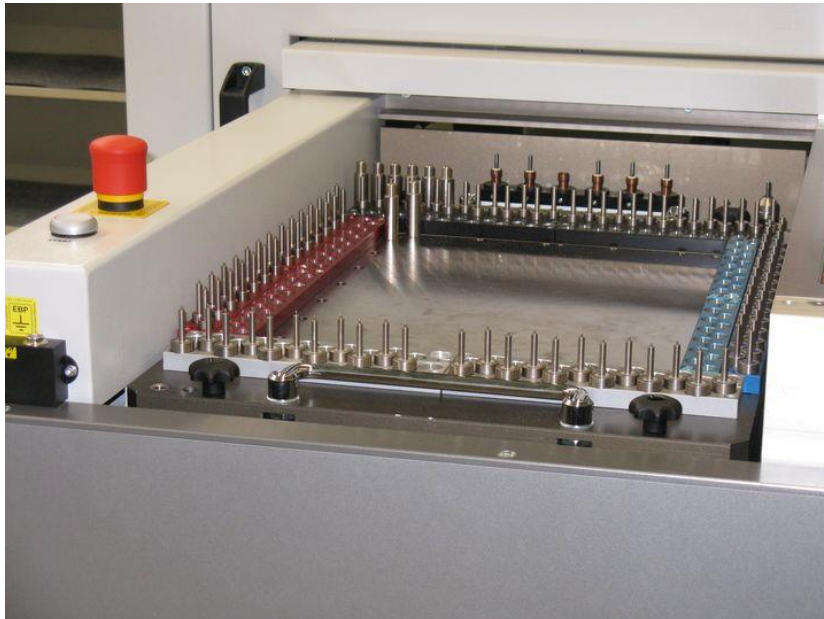
# SCHUNK Electronic Solutions Fixtures

# SCHUNK Fixtures

**Dedicated Fixture**



**Magnoplate**



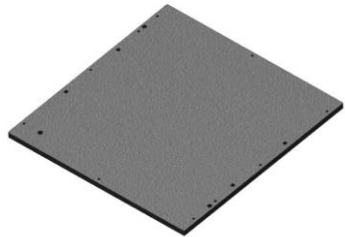
**Do-it-yourself fixture**



# Workpieceholder Package

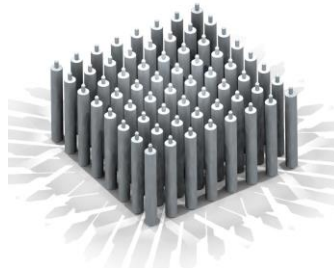
## „Do-It Yourself“ Starting Kit

2x base plate



+

100 x location  
Pins



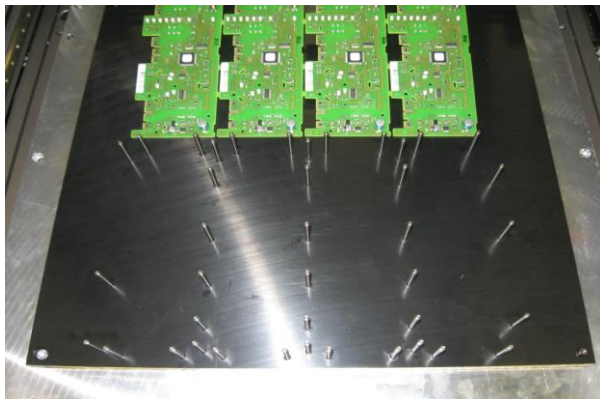
+

1x drill  
bit



+

1x Tool for securing  
the location pin



Milling area for SAR-1300-B

X,Y = 430mm x 350mm (17"x14")

# Workpieceholder Package

## „Do-It Yourself“ Starting Kit

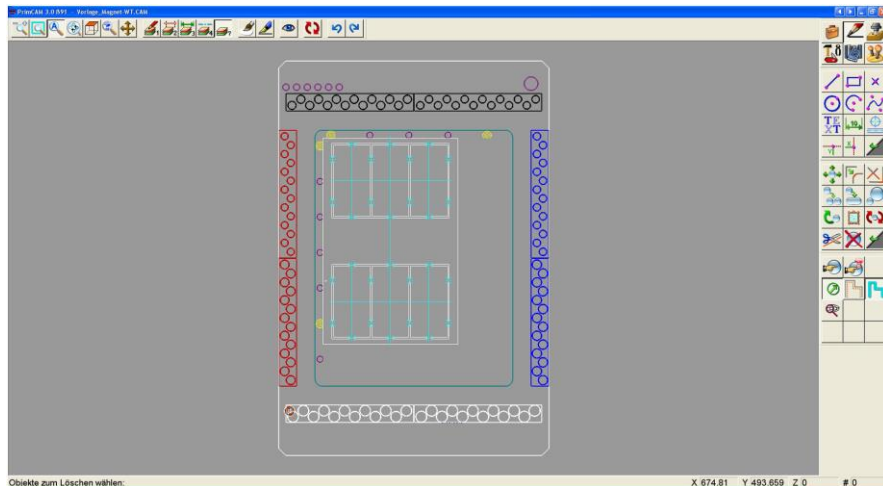
1. Holes are drilled using SCHUNK router
2. Pins are hammered into holes using tools provided
3. PCB Panel is placed onto Pins
4. Product is ready to be Depanelled



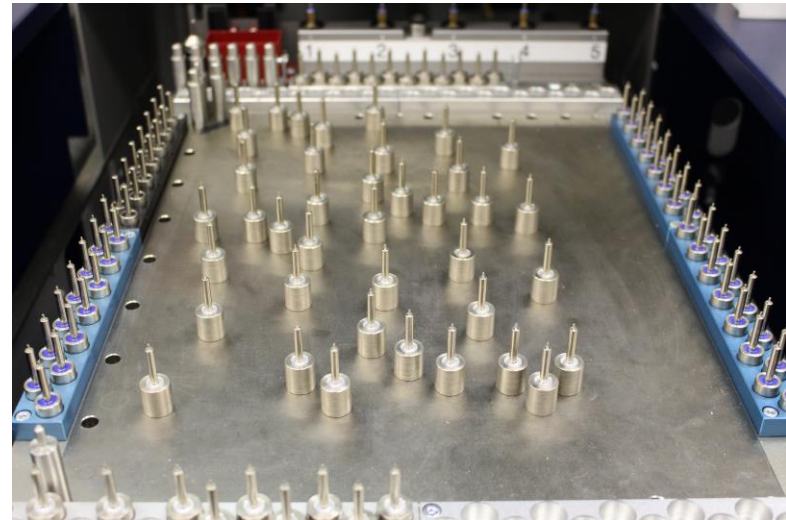
# Workpieceholder Package

## MAGNOPLATE

Program is written to place the magnets in position to hold Panel



Pins are placed by the router and then fixture is ready





# Workpieceholder Package

## MAGNOPLATE-Variations:

**Magnoplate-Standard:**

**Working Area 343mm x 261mm (X,Y)**

**Magnoplate-Plus:**

**Working Area 417mm x 310mm (X,Y)**

**Magnoplate-XXL:**

**Working Area 487mm x 463mm (X,Y)**

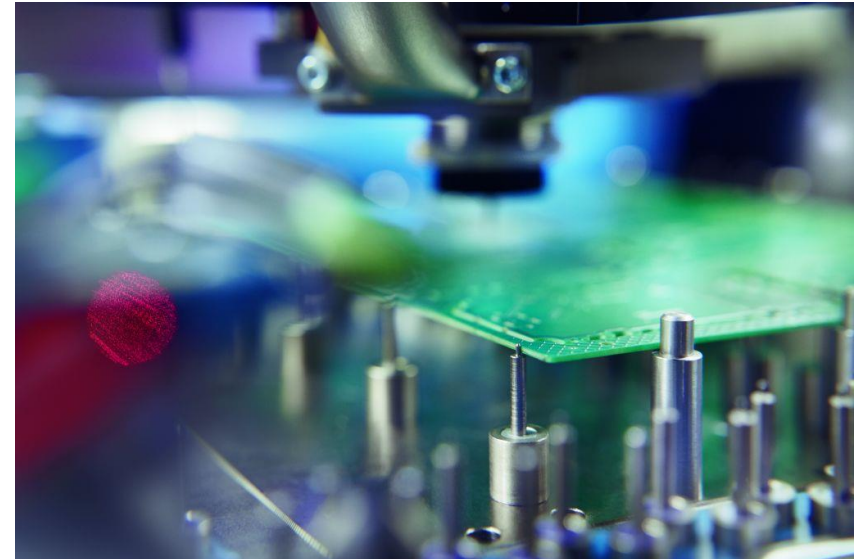


**MAGNOPLATE Standard and full equipment**

**8x magazine/16 x magazine**

**80x fixing pin/160 x fixing pin**

**24 x supporting pin/48 x supporting pin**



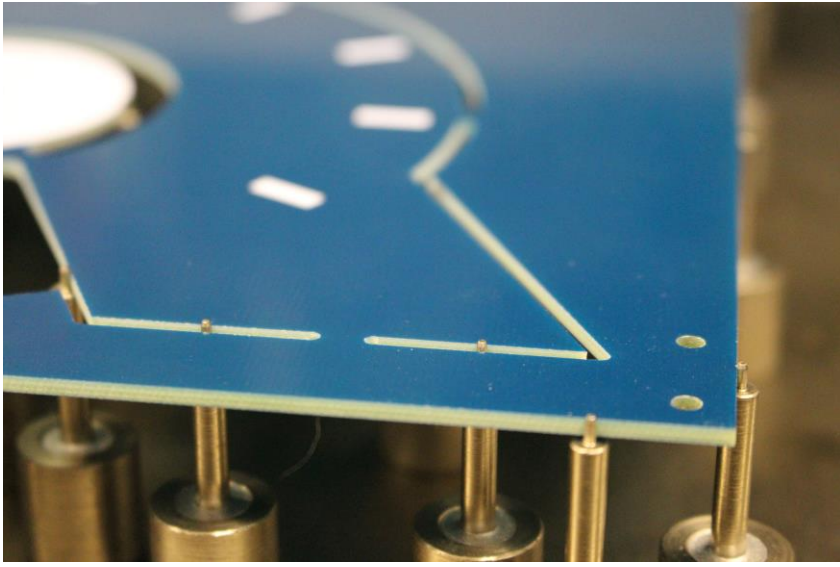
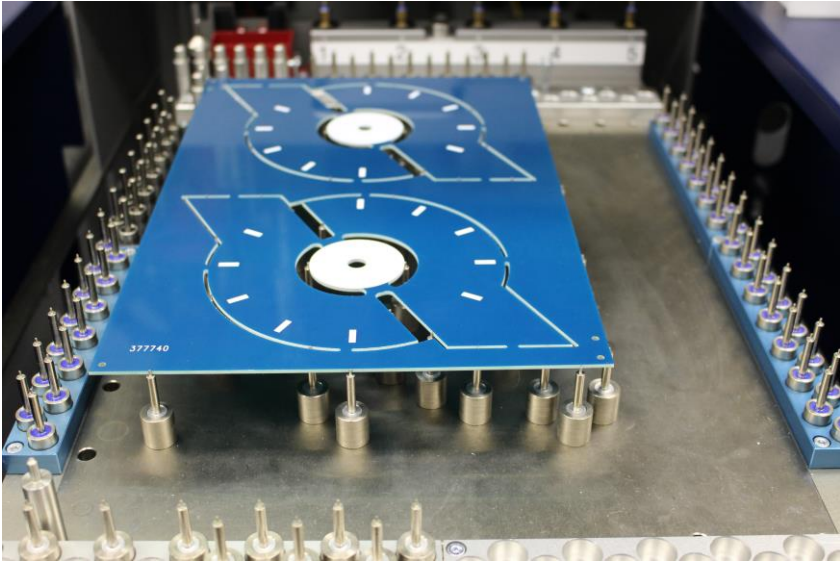
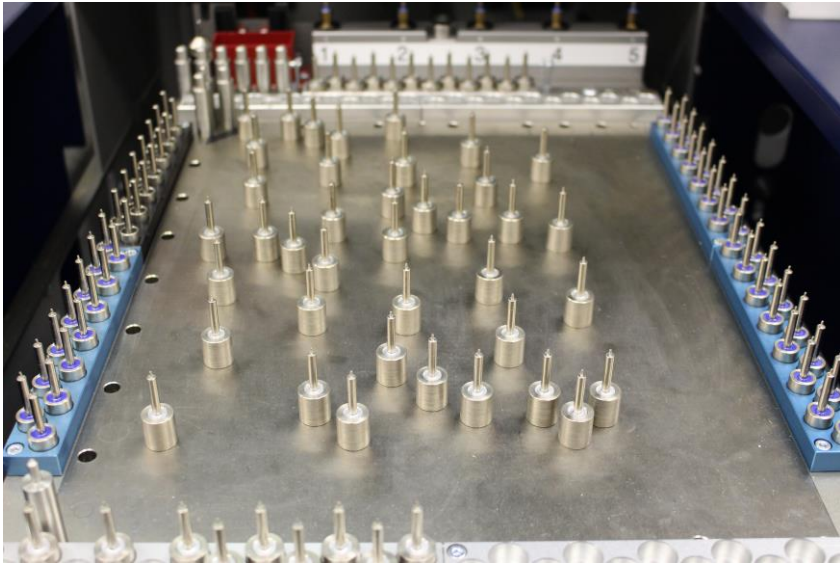
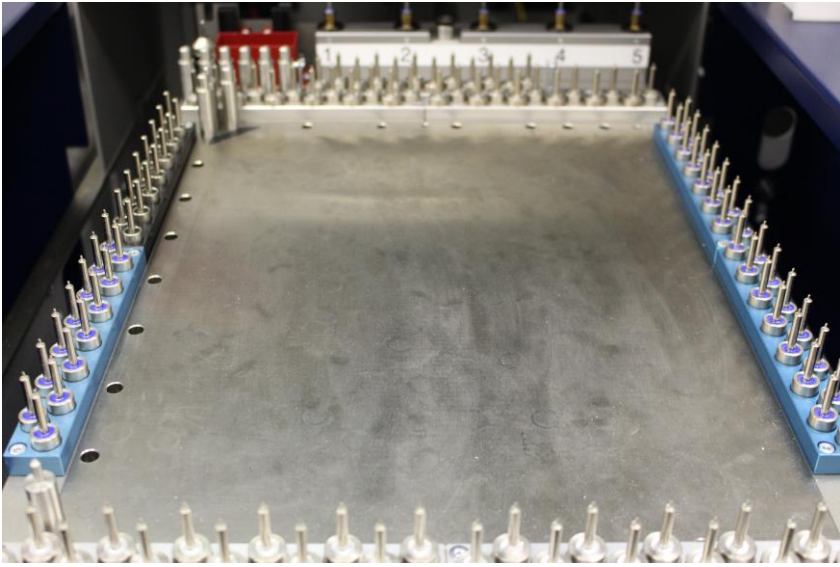
**MAGNOPLATE Plus**

**9x magazine**

**80x fixing pin**

**42x supporting pin**

# Workpieceholder Package



# Workpieceholder Package

## Flexible Workpiece Holder „MAGNOPLATE“ – Locking Plate

Locking plate is used to avoid magnets from being moved if large number of panels need to be cut

