

QUADRA™ 3

X-ray Inspection System

High Quality X-ray Inspection for Production Applications

Quadra™ 3 is your partner for high quality X-ray inspection at high magnification for quality control of production applications.

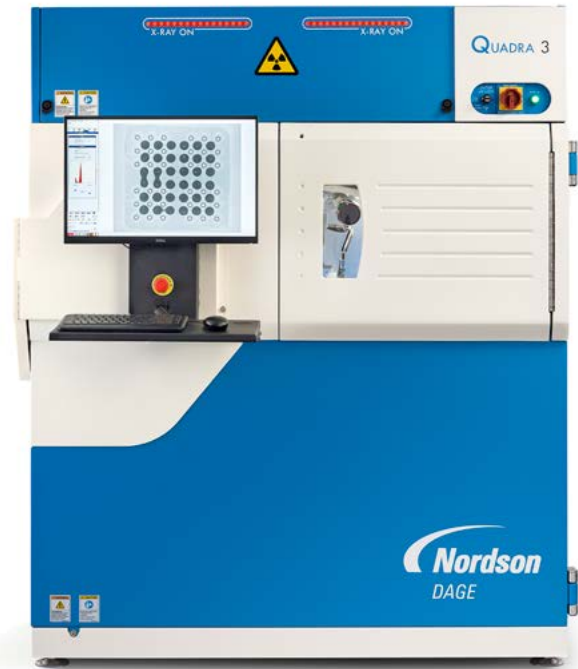
Detect a wide range of manufacturing defects including BGA, QFN and IGBT attachment, PTH filling, interfacial voiding, component cracking and counterfeit devices.

See the Finest Details

Clear, easy to interpret images show defects fast. The Aspire™ FP detector from Nordson DAGE is designed and manufactured in house, specifically for electronics samples.

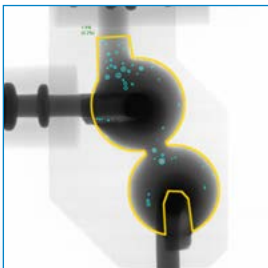
Simplicity as Standard

Finding defects is fast and easy thanks to Quadra's unique double oblique axis geometry. See every detail from all sides at high magnification, without having to rotate the sample.

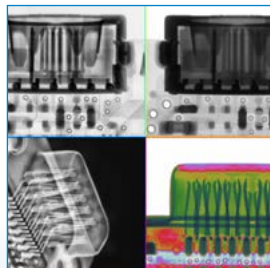


Maintenance Free

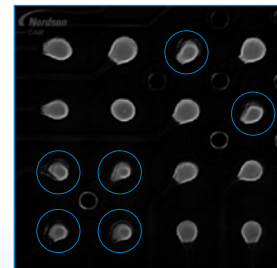
The QuadraNT™ X-ray source uses proprietary filament free technology, so regular preventative maintenance visits are not required, reducing your downtime and running costs.



Easily ensure IPC compliance with automatic measurement and voiding analysis that gives clear pass/fail results.



4-way split screen view makes identification and comparison easy.



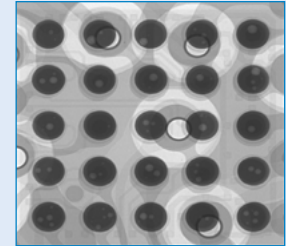
Head in pillow and open joints (see blue circles) effortlessly identified using X-Plane®

Seeing is Believing™

QUADRA

Specifications at a Glance

Options	
X-Plane®	View sample slides without additional CT hardware
Visualization for X-Plane	Create 3D models from X-Plane data
Heated Stage	Simulate reflow oven conditions, view solder processes in real time
HDR	High Dynamic Range Imaging enables you to see defects in very bright and very dark areas of the same image
Joysticks	For joystick navigation and zoom
Barcode Reader	Track samples easily
Filtering Tray	Reduce sample X-ray dose
Thin Sample Tray	Acquire clearer images of thin samples



Voiding in a Micro BGA array

QuadraNT™ X-ray Tube	
Type	Filament free transmissive
Feature Recognition	0.95µm
Max. Power	10W
Voltage	30-160kV

Aspire™ FP Detector	
Resolution	1.4 MP
Frame Rate	10 fps
Pixel Pitch	75 µm
Digital Imaging Processing	16-bit

Inspection	
Oblique Angle View	2 x 70° - No sample rotation required
Anti Vibration	Passive
Display Resolution	94 PPI
Inspection Area	510 x 445 mm (20 x 17.5")
Geometric Magnification	2,000x
Total Magnification	7,500x
Sample Weight (standard tray)	5kg (11lbs)
Display	Single 24" WUXGA 1920 x 1200

System	
Footprint	1570 W x 1500 D x 1900 H mm
System Weight	1950 kg (4300 lbs)
Power Supply	Single phase 200-230 VAC, 50/60 Hz, 16A
Typical Power Consumption	1KW
Operation Temperature	10-30°C
Humidity	<85% (non-condensing)
Operation	Mouse
OS	Windows 10 64-bit
X-ray Safety	<1 µSv/hr Meets all international standards

Americas + 1 760 930 3307
sales@nordsondage.com

Europe +44 1296 317800
globalsales@nordsondage.com

China +86 512 6665 2008
sales.ch@nordsondage.com

Germany +49 89 2000 338 270
sales.de@nordsondage.com

Japan +81 3 3599 5920
sales.jp@nordsondage.com

South East Asia +65 6552 7533
sales.sg@nordsondage.com

Taiwan +886 2 2902 1860
globalsales@nordsondage.com

United Kingdom +44 1296 317800
globalsales@nordsondage.com