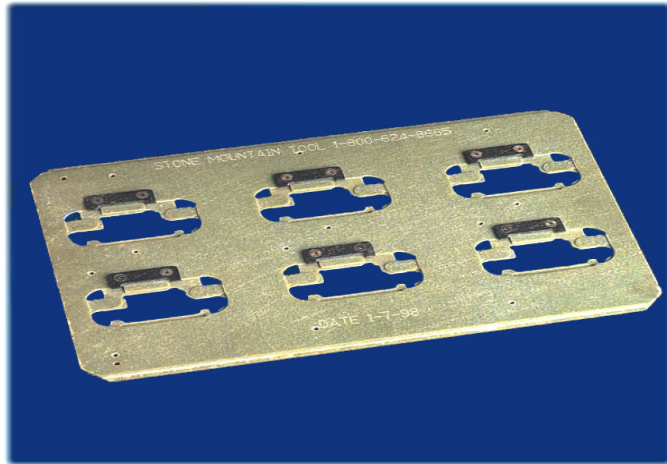
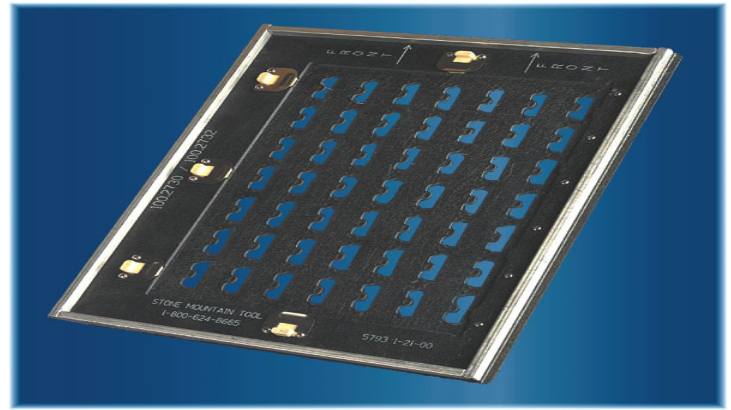
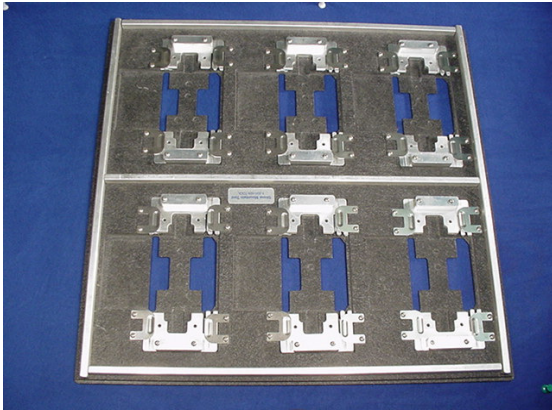
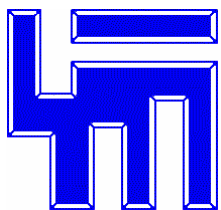


# MASKING SOLDER PALLETS



To reduce or even eliminate costly application of liquid mask or expensive single use Kapton dots.

At some time during the manufacturing process, the need to protect a part of a circuit board or detail is necessary. The application and drying time of liquid masks can be a slow and expensive process. The use of kapton tape only makes things worse. The use of a Masking Pallet can save a great deal of valuable time and provide a repeatable process. A masking pallet will have a series of selected areas of the material left intact to support and mask specific areas of the PCB. A correctly designed pallet can cover some of the most intricate designs, large openings, ground planes, post wave connectors, mounting holes, and gold fingers. Large arrays are sometimes weakened by the amount of material removed due to routed opens in a circuit panel, causing it to sag during the thermal cycle of the solder wave. A masking fixture will help prevent "flooding" by covering those routed opens to block solder passage and strengthen the panel to prevent scooping. This type of pallet also adds a more rigid, stable and flatter platform for and during your process.



## Stone Mountain Tool

Ph:800-624-8665 or 770-929-016 Fax:770-929-0226

480 Gees Mill Business Court Conyers, GA 30013

Web: [StoneMountainTool.com](http://StoneMountainTool.com)

Contact Us at: [Service@stonemountaintool.com](mailto:Service@stonemountaintool.com)